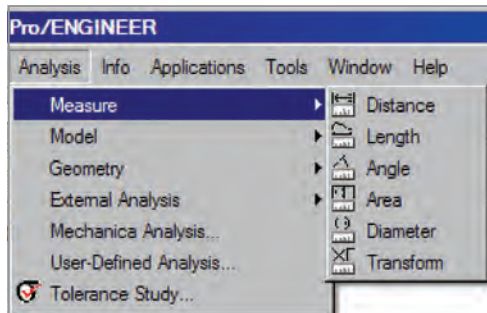


A model will contain useful information after working on it for even a short amount of time. It may be something as simple as the mass or volume of the model, or it may be measurements of distance and radii. These functions can be found under the ANALYSIS menu. This information can even be saved as a feature and listed as part of the model tree to be recalculated every time the model is regenerated.

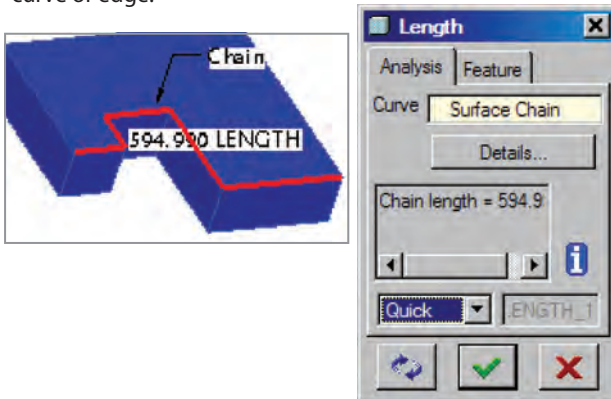
Look under the ANALYSIS menu. The main focus for this guide is the top two areas, MEASURE and MODEL ANALYSIS.



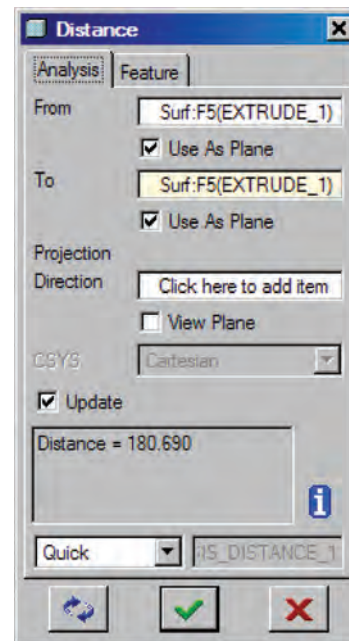
The Measure option offers several ways to measure items in the model.

Measure curve lengths, distances, angles, areas, diameters, and transforms. The focus in this reference guide will be on the first four.

The **Curve Length** option measures the true length of a curve or edge.



The next option is the **Distance** option. Set the filters in the lower right-hand corner of the Pro/ENGINEER window to select a specific type of geometry or use the pre-selection highlighting to guide the selection process. By selecting two surfaces on the part, Pro/ENGINEER creates a straight line measurement from one surface to another. The distance from surface to surface is indicated as a dimension on the model.



It is possible to project the measured distance onto a plane (or coordinate system) to get the projected distance along that plane. Here is the distance between two points projected onto a planar surface. The analysis gives us a projected distance of 70.05 with the actual distance of 78.3 units between the points. Notice that the results display both the Projected Distance and also the Actual Distance.

