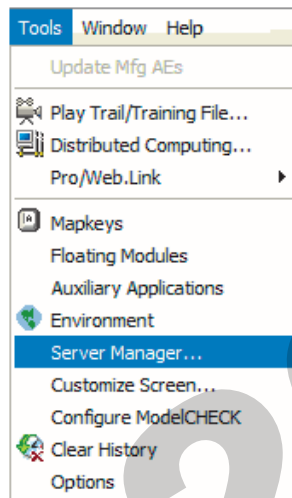


Before **CAD** users can begin working with ProductPoint, the server must be registered with Pro/ENGINEER. This will allow access to the server data from inside of Pro/ENGINEER, whether opening and modifying existing data or introducing new designs into the system.

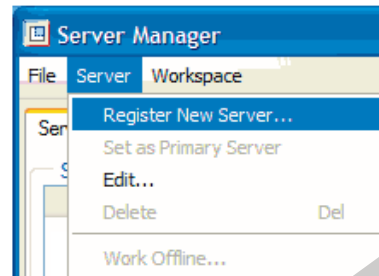
PROCEDURE

First, start the *Windchill ProductPoint Client Manager*. Without it, you will not be able to connect to the ProductPoint server. Also, the ProductPoint Client Manager is necessary for installing the *Windchill ProductPoint Client Service*, which is an integral part of the ProductPoint and Pro/ENGINEER integration. For more information, see *Windchill ProductPoint Client Manager* on page 5.

Start Pro/ENGINEER and navigate to Tools > Server Manager.



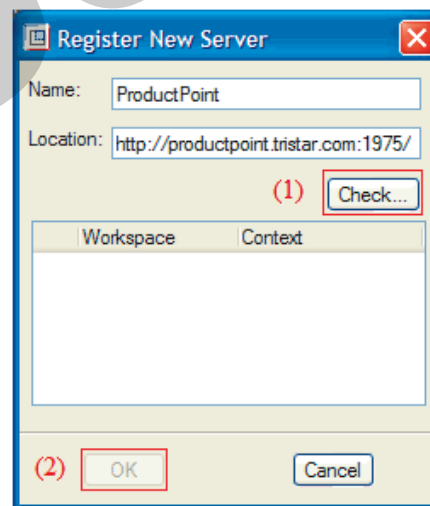
In the Server Manager window, navigate to Server > Register New Server...



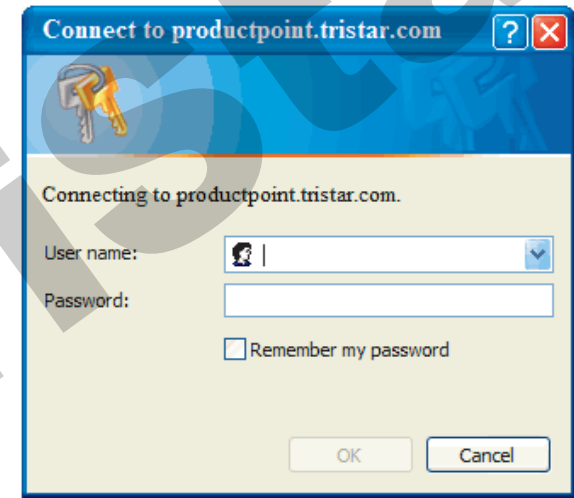
In the Register New Server window, enter the name and location of the ProductPoint server.

Example:
 Name: ProductPoint
 Location: http://productpoint.tristar.com:1975

Once the correct information has been entered, select the "Check" button (1, below). If the location of the server is valid, the "OK" button will become available (2). Select "OK" to register the server.



You will then be prompted to log in. Use the user name and password provided by your administrator.



If the ProductPoint server is the only server listed in the Server Manager, then it will automatically be the primary server. However, if more than one server exists, right-click the ProductPoint server and select "Set as Primary Server".

