

The Windchill ProductPoint Bulk Loader comes bundled with ProductPoint and does not require any additional licensing. It can be used to import data from a local or network drive. Data sets can include Pro/ENGINEER data, as well most other file types (there are a few exceptions, including executable files). In addition to saving time and effort with this process, the bulk loader provides an opportunity to rename duplicate files, fix missing dependencies, and map attribute and folder information to ProductPoint.

REQUIREMENTS

To use the bulk loader, the following requirements must be met:

Server:

- Windchill ProductPoint 1.1 installed
- Exclusive access to the system (no one can be using ProductPoint at the time)

Client:

- Pro/ENGINEER Wildfire 4.0 M100+ or Pro/ENGINEER Wildfire 5.0 F000+
- Windchill ProductPoint Bulk Loader installed

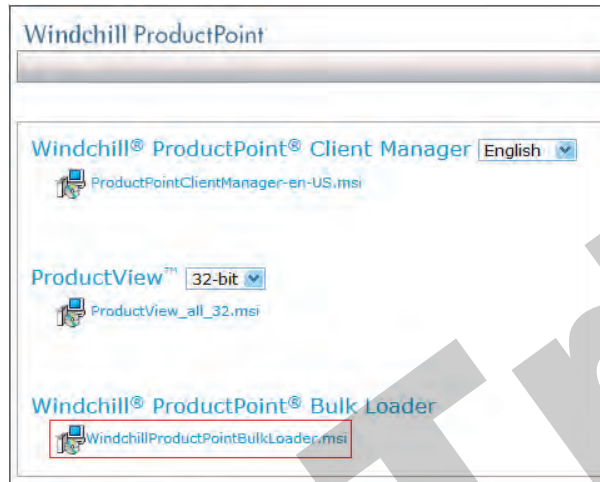
BULK LOADER INSTALLATION

The bulk loader can be downloaded from the ProductPoint server, at a web address of `http://<DNS registered host name>:<port>/downloads`.

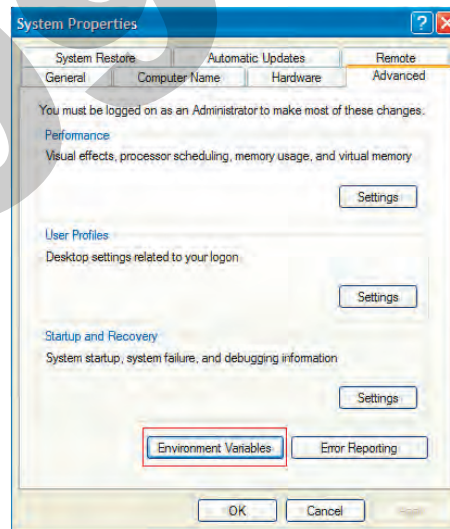
Example:

<http://productpoint.tristar.com:1975/downloads>

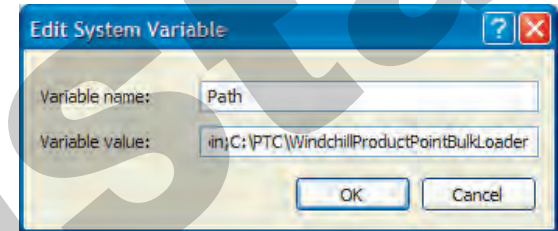
On a client machine, simply click the link to download the installer. Once downloaded, double-click the file to start the installation.



The installation process only requires you to input the installation directory. Once it is successfully installed, close the window. Then navigate to Control Panel > System > Advanced tab > Environmental Variables.



Edit the Path system variable to include the bulk loader installation directory.



SETTINGS FILE

Once the bulk loader is installed, the next step is to create a settings file. An example is provided in the installation directory (example_settings.properties). It may be easiest to edit this example file and then save it as a new text file. The settings file includes eighteen parameters for which values must be set.

Parameter	Value
Source_Directory=	<path to source>
Search_Path=	<path to dependents>
Load_All_Dependents=	true or false
Load_All_Versions=	true or false
File_Types_To_Load=	<list of extensions>
Target_ProductPoint_url=	<url>
Proe_Installation_Path=	<path to Pro/E install>
BulkLoader_Temp_Dir=	<path for outputs>
Attribute_Mapping_File=	<path to save file>
Folder_Mapping_File=	<path to save file>
User_Mapping_File=	<path to save file>
Batch_Size=	1 to 5000
Load_Timeout	number of minutes
Use_Source_Revision_Label=	true or false
Mark_As_Released=	true or false
Allow_Objects_With_Missing_Dependents=	true or false
Use_Last_Modified_Timestamp=	true or false
Use_Last_Modified_By=	true or false